

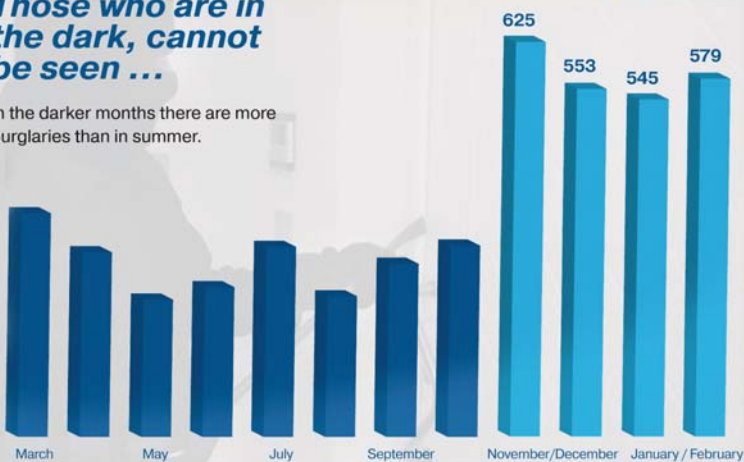


Burglars? – No thank you!

Roller shutter automation stops burglars in their tracks

Those who are in the dark, cannot be seen ...

In the darker months there are more burglaries than in summer.



Source: Police headquarters Cologne, "Köln Studie 2006"

The winter months traditionally see an increase in domestic burglaries. And windows are still the easiest way for burglars to enter a home. The correct use of roller shutter automation can help to stop burglars targeting your property – a key selling point for specialist dealers.

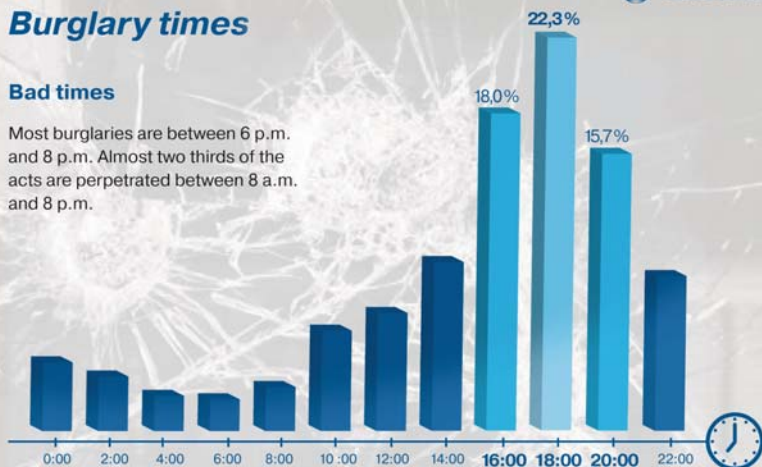
An apartment or house is broken into every five minutes in Germany. Almost half of all the burglaries are carried out during the dark winter months: The peak season for unwanted visitors is between November and February.

A summary of crime statistics for 2008 (1) show that 38.2 per cent of the 108,284 burglaries were, fortunately, unsuccessful. Note-worthy: The number of attempted but unsuccessful burglaries has gradually increased in recent years. In 1993, this figure was only 28.3 per cent.

Burglary times

Bad times

Most burglaries are between 6 p.m. and 8 p.m. Almost two thirds of the acts are perpetrated between 8 a.m. and 8 p.m.



Source: Police headquarters Cologne, "Köln Studie 2006"

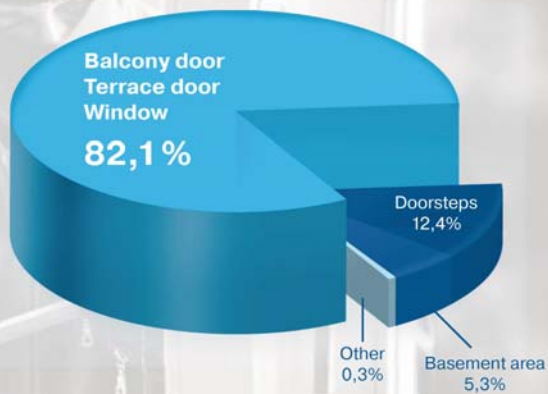
This underlines the efficiency of effective security measures and is a great selling point even for roller shutter specialists. "Besides alarm systems and high-quality locks and bolts, roller shutters and roller shutter auto-



mation are an excellent way of keeping thieves out,” explains Erwin Pauwels, head of marketing at Becker-Antriebe GmbH. The specialist company based in Sinn, Germany, offers roller shutter and sun protection drives with corresponding control units and automation.

Window-Shopping

In four out of five cases, the thief enters through windows or doors in detached houses.

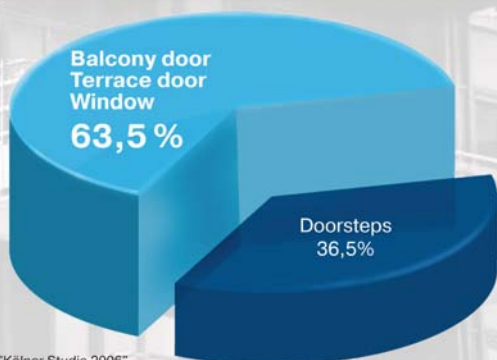


Windows are an easy target

Roller shutter specialists are particularly interested in how burglars try to enter buildings. Because the most vulnerable part of a home is not generally the front door: In four out of five cases, thieves will enter a house via a window – or at least try to. Doors, on the other hand, are only used as the entry point for one in every nine burglaries.

Higher floors do not protect against theft

Even in flats, almost two thirds of the thieves get in through the windows and doors.



Source: Police headquarters Cologne, "Kölner Studie 2006"

Windows and balcony doors are even the favourite target in two out of three burglaries in upstairs apartments. “It does not solely apply to ground floor flats,” adds Erwin Pauwels. The number of burglaries in upstairs apartments has risen in the past few years. According to a survey by the Cologne police force (2), thieves generally use ladders which have been left outside, wheelie bins, pergolas or garage extensions to enter a building. “These figures

show how important it is for homeowners to bear windows and roller shutters in mind when protecting their property against trespass and theft,” says Erwin Pauwels.

**First obstacle: Mechanical resistance**

A robust roller shutter provides mechanical resistance which has to be overcome – and often encourages opportunist thieves to move on to an easier target: A report by a German crime prevention project (Polizeiliche Kriminalprävention der Länder und des Bundes) (3) concluded that the majority of criminals move on to another target if it takes longer than two to five minutes to enter a building.

The police in Germany recommend DIN 1627-tested, burglary resistant roller shutters for the greatest security. A cost-effective alternative which frightens off almost all burglars is roller shutters in accordance with DIN 18073 with increased burglary protection. And an anti-lifting device may also ensure that householders avoid ending up as a burglary statistic. Becker-Antriebe has extensive know-how in this field: In addition to spring curtain suspension, the tubular drives with electronic limit switches of type RP+, PRF+ and PR+ also support mechanical anti-lifting devices of most manufacturers. The anti-lifting devices are even automatically detected. The police expressly state that roller shutters must be fitted professionally to provide a real deterrent: And this fact is also a key selling point for specialist dealers.

Making your property look occupied

An unoccupied house makes a much more attractive prospect than one with people in it. “Roller shutter automation can play an important role in making your property look occupied,” explains Erwin Pauwels. Becker timers for roller shutters, such as the radio-controlled version Centronic TimeControl TC511 or the wired version TC52, offer burglary protection and maximum convenience. The standard version opens and closes roller shutters to-the-minute in the mornings and evenings.

But even when the occupants are away – for a weekend break or longer holiday –, the house still appears occupied, since the control unit can open and close the roller shutters randomly. In combination with the radio-controlled socket Centronic VarioControl VC180, it is also possible to simply activate other devices, e.g. lamps or televisions.



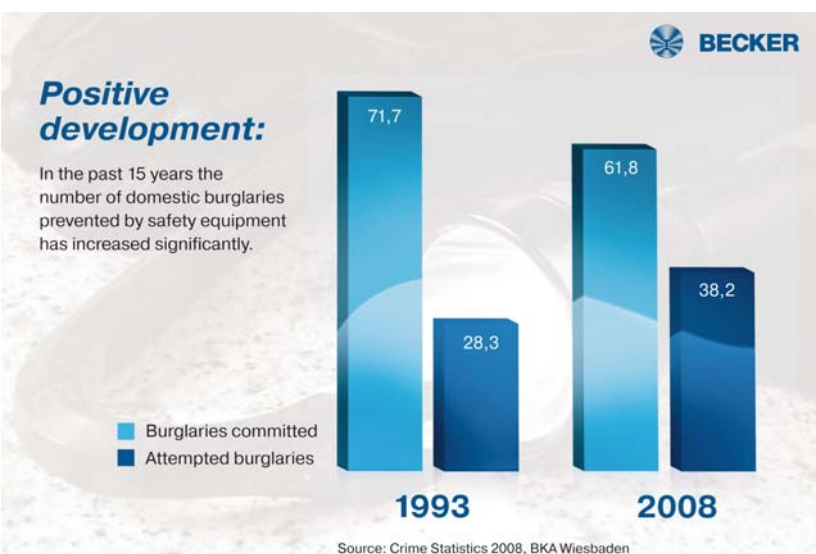
Roller shutters react to breaking glass

Burglars do not only come at night – every third burglary occurs during the day. Therefore, light sensors for roller shutter automation should also be part of your armoury against criminals: “Their main task is to measure sunlight and to inform the automation system when it is time to close the roller shutters. And they also help to keep out burglars: The Becker radio-controlled light sensor SC431 has an integrated glass break sensor. The unobtrusive plastic box with a diameter of just five centimetres is fixed to the inside of the window using a sucker. The roller shutter closes automatically as soon as the window is attacked.

Installation is incredibly easy. Erwin Pauwels explains: “The fitter puts the roller shutter drive into programming mode via the master transmitter and subsequently presses two buttons at the radio-controlled light sensor – the sensor immediately knows for which roller shutters it is responsible.”

Electronic system guarantees security

Not only mechanical components are a potential weak spot. The electronic age also provides criminals with new opportunities. One of these is the manipulation of radio-controlled roller shutters. A burglar can use a receiver to record the radio signal of a simple roller shutter transmitter. This signal can then be replayed at a later date to simply open the roller shutter.



Therefore, all Becker Centronic radio transmitters are equipped with radio signal copy protection, a so-called “rolling code system”. The idea is quite simple: The transmitter sends a rolling code together with the actual control signal. The receiver is informed in advance of the subsequent code, and the drive only reacts when the receiver actually receives this new code together with the next opening



signal. Special advantage of the Centronic transmitter: Everything is configured automatically. Once the transmitter and receiver have been coupled for the roller shutter drive at the push of a few buttons, the rolling code system functions independently. "And a combination of all these systems helps to keep burglars from entering a property," comments Erwin Pauwels.

Sources:

- (1) Crime statistics 2008, Federal Criminal Police Office, Wiesbaden, Germany
- (2) "Cologne Survey 2006", Police Headquarters Cologne, Germany, 2007
- (3) "The burglar gives up after five minutes!", German crime prevention project (ProPK), Stuttgart, German forum for crime prevention (DFK), Berlin, 2006

Interesting German language links:

- Police information on home security:
<http://einbruchschutz.polizei-beratung.de/>
- Initiative for active burglary protection of security sector associations and the police: <http://www.nicht-bei-mir.de/>
- Website of the community network "Zuhause sicher e. V.":
<http://www.zuhause-sicher.de/>

For further information, please contact:**Becker-Antriebe GmbH**

Marketing
Friedrich-Ebert-Straße 2-4
35764 Sinn
Germany
Phone: +49(0)2772 / 507-0
Fax: +49(0)2772 / 507-299
E-Mail: info@becker-antriebe.com
www.becker-antriebe.de

Corporate communication:

DIVIICE Advertising GmbH
Wingertshecke 6
35392 Gießen
Germany
Phone: +49(0)641 / 922 62-0
Fax: +49(0)641 / 922 62-22
E-Mail: info@diviice.de
www.DIVIICE.de